



LANDMARK
— REALTORS® —

HOME & ACREAGE FOR SALE

600 Dean Creek Road | Lavina | MT | 59046



This home is off the main road tucked away with pine trees all around. It is in immaculate condition. RO & water conditioner with well and two cisterns. Fire suppression built into the home. 684 sq. ft. wrap around deck and a front porch. A storage shed and single car garage. A small water feature with running water. Also there are 3 rental spots, one for mobile home has cistern and septic and 2 camping spots for tents or portable cabins, no water. Out of the 293 acres, 148 acres are in hay land. Plenty of land to have your own horses and cows. Great get away home in the mountains. Wood and gas stove in lower level in case of power outage. High speed internet.

- Modular
- 6 Bedrooms
- 3 Bathrooms
- 3,538 sq. ft.—Buyer to verify!
- Built in 2002
- Single Detached Garage
- Lot Size: 293.20 Acres
- MLS #300370

MontanaRanches.com



JAKE KORELL
406.698.4600

Landmark Realtors

**1925 Grand Avenue,
Suite 143
Billings, MT 59102**

Phone: 406.248.3101
Fax: 406.248.1633
E-mail:
Jake@MontanaRanches.com

\$699,000

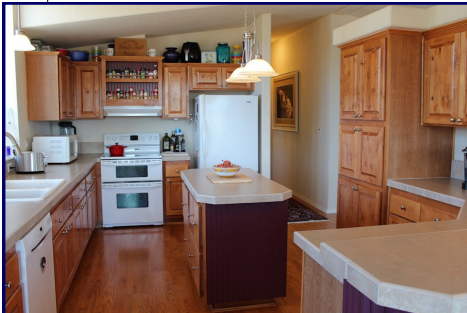
Information herein deemed reliable, however, is not guaranteed. The sale offering is made subject to errors, omissions, change of price and prior sale and withdrawal without notice in accordance with the law. This property is offered without respect to race, color, creed, national origin or familial status.

600 DEAN CREEK ROAD



Main Level: 1,769 sq. ft.

- Great Room
- Kitchen ~ all appliances
- Master
- Two additional bedrooms
- Two bathrooms
- Utility room



Basement: 1,769 sq. ft., daylight

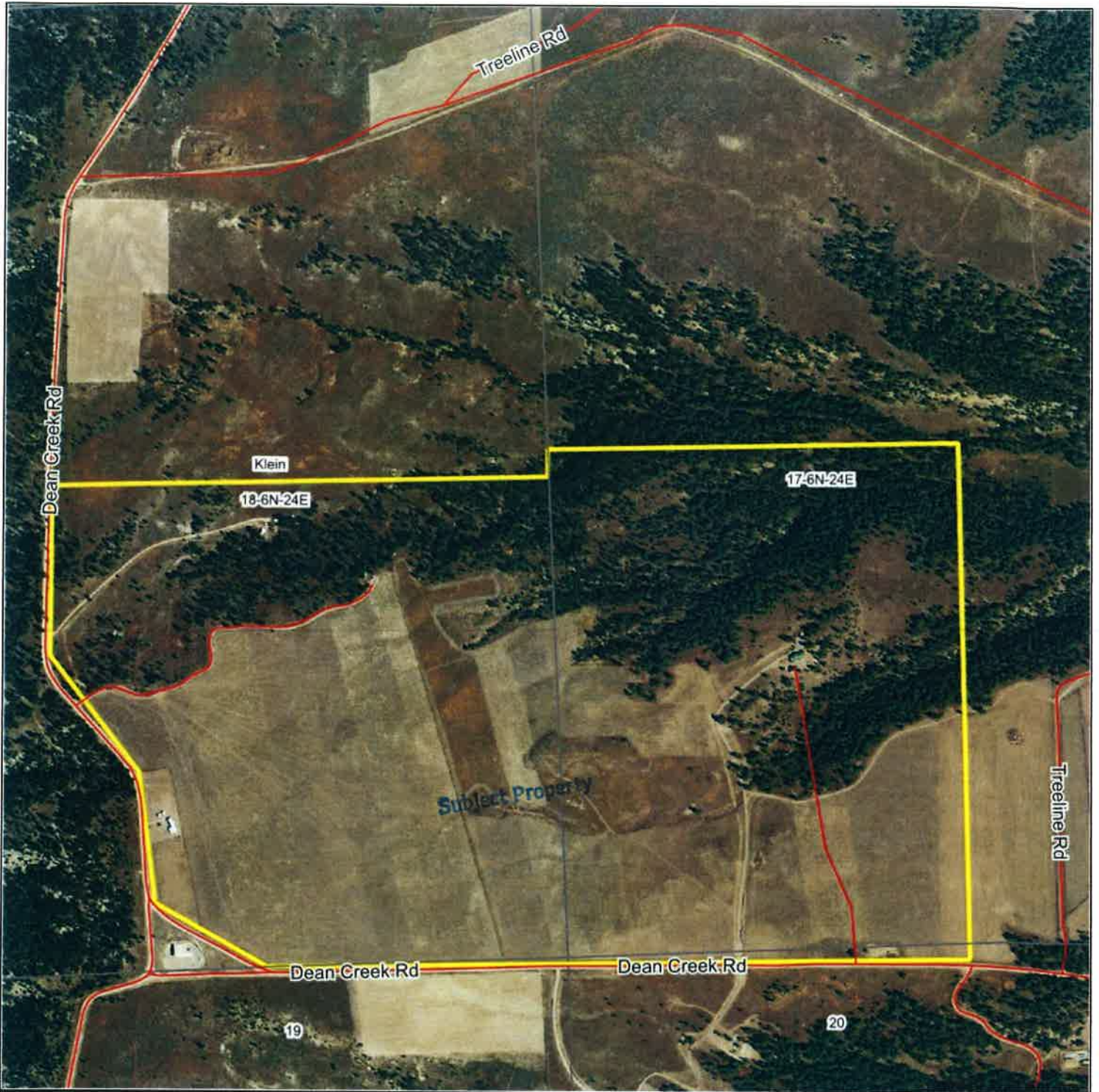
- Family room
- 3 Bedrooms / Full bath

Additional Features:

- High speed internet
- Heating ~ ground source, electric / Central air by ground source, 2 back up stoves (1 propane, 1 wood) in lower level in case of power outage.
- Water ~ cistern / Sewer ~ septic tank
- Wrap around deck, covered patio, front porch
- Single detached garage, shed, shop
- Basement ~ Super insulated with Quadlock Styrofoam bricks into which concrete was poured
- Lot size ~ 293.20 acres—fenced, hilly, secluded, slope, trees, view, well lawn
- Taxes ~ \$1,989
- Schools ~ Lavina



Aerial Map



Maps Provided By



surety
CUSTOMIZED ONLINE MAPPING

© AgnData, Inc. 2019

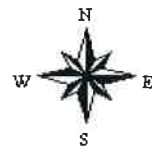
www.AgnDataInc.com

Map Center: 46° 16' 8.71, -108° 45' 30.42

This map is provided as a visual aid only
and accuracy cannot be guaranteed.
LANDMARK REALTORS

18-6N-24E
Musselshell County
Montana

0ft 847ft 1694ft



6/24/2020